



# Jupiter Emerging & Frontier Income

Investment companies | Annual overview | 19 November 2020

## Underappreciated emerging and frontier income access

Jupiter Emerging & Frontier Income (JEFI) offers unique access to what its manager considers to be well-positioned emerging and frontier market companies in many countries where economic activity appears to have largely returned to normal. Perhaps for the first time, companies based in the likes of Taiwan, South Korea, and even Kenya could claim to have greater confidence in their ability to deliver dividends at pre-pandemic levels than those based in developed markets. Promising recent news on the vaccine front could see sentiment improve in some of JEFI's hardest-hit markets, like Brazil, India, and Mexico.

JEFI provides less exposure to China than some of its peers, as its manager, Ross Teverson, felt that greater value could be found in the likes of Hong Kong, Taiwan, and Mexico. As we explain on page 15, this, and the withdrawal of funds from many emerging and frontier (EM and FM) markets, has held back returns in recent months and the discount has widened. Still, JEFI's shares are currently yielding 5.4% and, with around a third of the portfolio sitting on net cash and debt levels typically lower than those of the developed world, Ross says that equity income investors still have good options in JEFI's chosen markets.

## Long-term capital and income growth

JEFI aims to generate capital growth and income over the long term, through investment predominantly in companies exposed directly or indirectly to emerging markets and frontier markets worldwide.

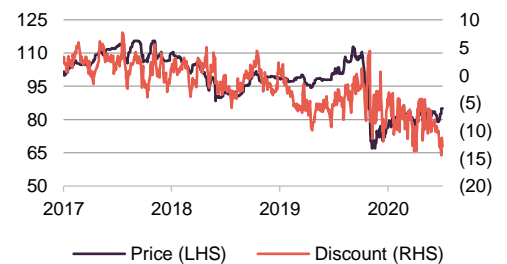
Year ended	Share price total return (%)	NAV total return (%)	MSCI Emerging Markets total return (%)	MSCI Frontier Markets total return (%)	MSCI World total return (%)
31/10/2018	(16.7)	(12.1)	(8.7)	(8.4)	5.7
31/10/2019	14.1	18.5	10.9	9.6	11.9
31/10/2020	(13.9)	(10.2)	8.7	(2.2)	5.0

Source: Morningstar, Marten & Co

Sector	Global emerging
Ticker	JEFI LN
Base currency	GBP
Price	85.0p
NAV	97.5p
Premium/(discount)	(12.8%)
Yield	5.4%

## Share price and discount since launch

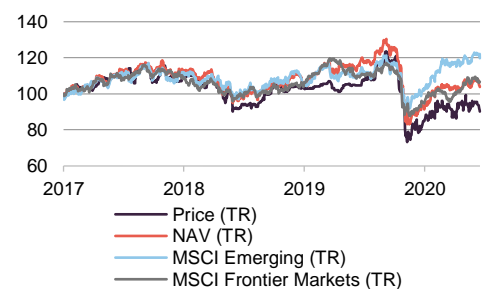
Time period 16/05/2017 to 16/11/2020



Source: Morningstar, Marten & Co

## Performance since launch

Time period 16/05/2017 to 31/10/2020



Source: Morningstar, Marten & Co

NB: Marten & Co was paid to produce this note on Jupiter Emerging & Frontier Income Trust and it is for information purposes only. It is not intended to encourage the reader to deal in the security or securities mentioned in this report. Please read the important information at the back of this note. QuotedData is a trading name of Marten & Co Limited which is authorised and regulated by the FCA. Marten & Co is not permitted to provide investment advice to individual investors categorised as Retail Clients under the rules of the Financial Conduct Authority.



## Contents

<b>Signs of further green shoots across emerging and frontier markets</b>	<b>3</b>
<b>Investment process</b>	<b>4</b>
Types of change	5
Take advantage of biases	5
Selecting stocks	5
Income	6
Portfolio construction	6
Sell discipline	7
Risk controls	7
ESG and change-based investing	8
<b>Asset allocation</b>	<b>9</b>
Top 10 holdings	11
Portfolio activity over the past 12 months	13
<b>Performance</b>	<b>15</b>
Performance drivers – positive contributions led by Taiwan tech	16
Detractors	17
Peer group comparison	18
<b>Dividend</b>	<b>19</b>
<b>Premium/(discount)</b>	<b>19</b>
Annual redemption facility	20
<b>Fees and costs</b>	<b>21</b>
<b>Capital structure</b>	<b>21</b>
Major shareholders	21
<b>Board</b>	<b>22</b>
<b>Fund profile</b>	<b>23</b>
Investment manager	23
<b>Previous publications</b>	<b>24</b>

<b>Domicile</b>	<b>UK</b>
<b>Inception date</b>	<b>15 May 2017</b>
<b>Manager</b>	<b>Ross Teverson</b>
<b>Market cap</b>	<b>72.7m</b>
<b>Shares outstanding</b>	<b>85.5m</b>
<b>Daily vol. (1-yr. avg.)</b>	<b>193.6k</b>
<b>Net gearing</b>	<b>12.0%</b>

[Click here for our most recent update note](#)



[Click here for updated JEFI factsheet](#)



[Click here for JEFI's peer group analysis](#)



### Analysts

**Shonil Chande**

[sc@martendandco.com](mailto:sc@martendandco.com)

**Matthew Read**

[mr@martendandco.com](mailto:mr@martendandco.com)

**James Carthew**

[jc@martendandco.com](mailto:jc@martendandco.com)



## Signs of further green shoots across emerging and frontier markets

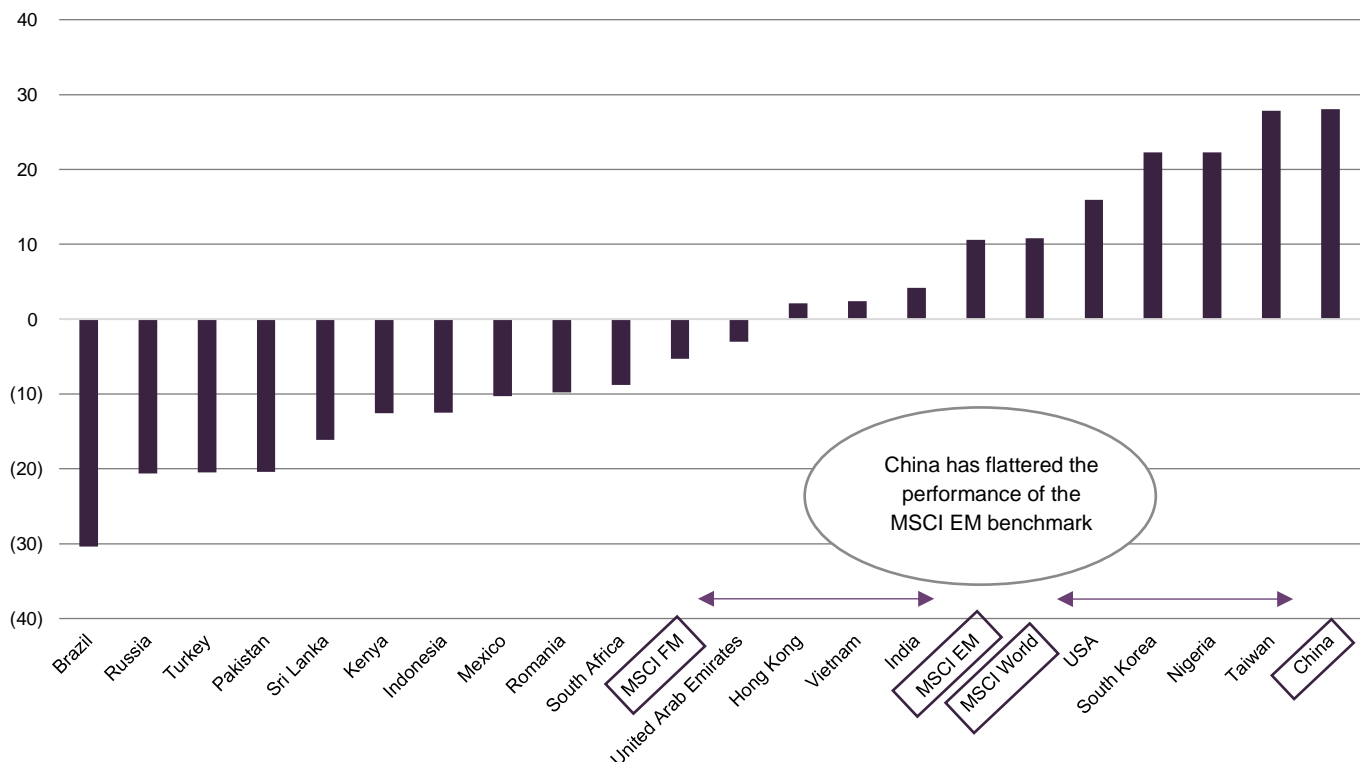
China dominates the MSCI Emerging Markets Index (JEFI's benchmark)

JEFI's adopts a true active strategy with its portfolio only loosely resembling the benchmark

China has undergone a remarkable turnaround since February, with economic activity returning to near-normal levels in just a few months. Led by its technology behemoths and pushed on by resurgent domestic retail investors, China is the best performing major global equity market so far this year, as Figure 1 illustrates. The fact that China accounts for over 40% of the MSCI Emerging Markets Index (JEFI's benchmark) largely explains that index's performance.

The stock-picking style favoured by Ross means that JEFI's portfolio only loosely resembles the benchmark. Much more emphasis is placed on the fundamentals of the businesses that it invests in. As discussed in the asset allocation section, the manager believes that greater value can currently be found in the likes of Hong Kong, where many companies trade at discounts to their Chinese-mainland peer group.

**Figure 1: Year-to-date performance (%) of various MSCI Indices (in sterling), as at 16 November 2020**



Source: Bloomberg, Marten & Co

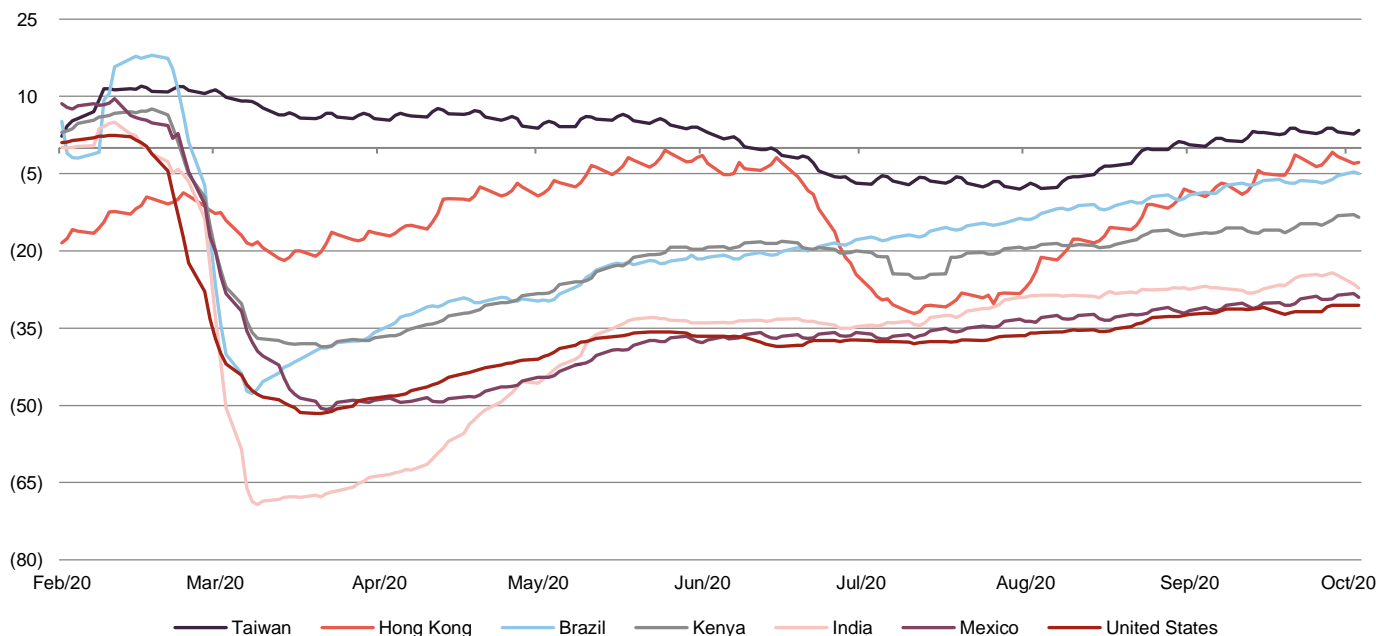
While the performance of China, and to a lesser extent Taiwan and South Korea, has generated a lot of interest, many countries across the emerging and frontier landscape have been quietly returning to near-normal levels of movement and economic activity. With more than one promising vaccine now on the horizon,

Promising recent developments on the vaccine front will be particularly well received in countries that have been hit hardest, like India

activity and confidence could accelerate further, particularly in countries that have been most acutely affected by the pandemic.

India has been one of the main exceptions, having been hit particularly hard. Ross notes that while some countries have seen active cases peak over recent weeks, the trough in economic activity was reached in May. Whilst stimulus measures implemented in developed markets have dwarfed those in emerging and frontier markets, demographics would appear to have worked in the emerging world's favour. As Figure 2 illustrates, using data captured by Google's weekly community mobile reports using anonymised location history data, Taiwan and Hong Kong's all-in early response efforts seem to have allowed disruptions to workplace attendance to be minimised. Kenya represents a good example of a frontier market that has also returned to normal activity. In Figure 2, the US is used as a broad control group for developed markets. Disruption has been more severe across Western Europe.

**Figure 2: Google mobility trends for workplaces – selected markets – 7-day moving averages covering the period from 17 February to 27 October 2020**



**Source:** Google Community Mobile Reports. Click [here](#) for more information. Note: Figures are compared to baseline and exclude weekends and public holidays

## Investment process

JEFI invests in EM and FM companies where change is underappreciated by the market

The manager's investment approach for JEFI is different from that of its peer group, and can be summed up as 'change-based investing'. It involves identifying a change or an improvement in a business that is not already reflected in its share price, but where the manager can pinpoint a catalyst for a re-rating.

The manager acknowledges that the approach, which combines both value and growth elements and is style agnostic, makes the fund hard to pigeonhole. That

means, though, that the performance of the portfolio should be less dependent on where we are in the economic cycle.

The process revolves around stock selection. The manager does not formulate macro views or incorporate them into portfolio construction. The only top-down element to portfolio construction is in ensuring adequate risk diversification.

## Types of change

---

- Company-specific change: the most common type of change that the manager identifies is that which is within the power of company management. Examples would include the launch of new products and services or changes to capital structure.
- Industry change: typically about improving competitive structure within an industry. The manager cites the example of the IT hardware sector, where a fragmented industry has become an oligopoly, with greater pricing discipline.
- Structural change: which tends to be very long-term.

The manager has no target in mind for allocations to each 'bucket,' but wants a reasonable spread of the different types of change within the portfolio.

There are many catalysts for a rerating but the manager cites examples such as the publication of sales data; earnings announcements; investor roadshows; and announcements of returns of capital.

## Take advantage of biases

---

Reflecting lower levels of research, mispricing of companies is more prevalent in EM and FM, presenting opportunities to invest in robust companies with attractive secular growth potential. The manager highlights some of the emotional and cognitive biases that create opportunities to profit from underappreciated change.

- Anchoring – the tendency of markets to be preoccupied with past performance and perceptions of a company;
- Institutional inertia – the tendency for investors to overlook attractive opportunities in favour of familiar widely owned companies; and
- Short-termism – the overemphasising of short-term news, which can come at the expense of grasping long-term structural change.

## Selecting stocks

---

A proprietary quantitative model, which scores stocks on factors such as earnings growth and valuation metrics, is used to highlight potential opportunities. The model helps to provide ideas on a universe of 6,000 stocks, which compares with around 1,100 within the universe of the MSCI Emerging Markets Index. This provides approximately a quarter of ideas for the portfolio. The model includes a liquidity threshold of turnover of \$1m, but the manager says that JEFI's closed-end structure allows it to hold stocks that are less liquid than those in the equivalent open-ended funds, and that stocks that do not meet the threshold can be included in the JEFI portfolio.

The types of change targeted include those that are company-specific, industry-led, and structural in nature

Biases, which are more apparent in emerging and frontier markets, can provide attractive entry points

JEFI can pick stocks from a much wider universe than is available for classification to the MSCI Emerging Markets Index

Access to the wider Jupiter team

About 10% of the fund will be in stocks with future income potential

JEFI's portfolio is designed to be comprised of 40-45 stocks

Other ideas come from a variety of sources, notably from the breadth of investment management and analytical support offered by the rest of Jupiter's team (each manager specialises in research into specific sectors). For example, Jupiter's UK small-cap manager has some holdings in common with the fund by virtue of companies operating within emerging or frontier markets but having a listing in London.

The manager ensures that talks can be held with company management before JEFI invests. They will meet them when they can – they travel extensively. The team has around 1,000 face-to-face or telephone meetings with companies in a typical year.

The manager also try to find independent evidence that supports the investment thesis for each stock. For example, interviewing both local and international competitors and customers before investing.

## Income

---

The manager says that the companies that the fund owns will often have strong balance sheets (about a third of the portfolio has net cash). Companies will also tend to have high-income visibility and above-average levels of dividend growth. Notionally, the manager allocates stocks to one of three 'dividend buckets'.

About 10% of the fund will be in stocks with future income potential. Typically, these will have a yield between 0% and 2%. The manager feels that it is important not to have a minimum yield threshold for the inclusion of stocks within the portfolio. They do not mind buying some low-yielding companies with the prospect of above-average dividend growth.

About 50% of the fund can be classified as income growth stocks. These have a yield between 2% and 6%, have an established track record of paying dividends, and demonstrate positive change that supports dividend growth.

The balance of the portfolio, about 40% of the fund, is classified by the manager as 'high-income visibility' stocks. These will typically have yields above 6%, predictable dividend streams and may have some associated dividend growth from gradual structural change.

## Portfolio construction

---

Position sizes in the portfolio will vary between 1% and 5%. The manager wants each stock to make a meaningful contribution to performance; this helps set the minimum position size. The maximum position size helps avoid a situation where an individual stock becomes the main driver of portfolio performance and a concentration risk.

New position sizes depend largely on the strength of the manager's conviction but are also influenced by liquidity and the extent that the position will diversify fund factor risk. The portfolio should comprise, therefore, about 40–45 stocks and the manager aims to operate a 'one in, one out' policy.

The maximum exposure to frontier markets is capped at 25%

Reviewing all stocks that drop to below 1% of the fund can reduce the risk of holding too many 'hope stocks'

No more than 10% of can be invested in any single holding at the time of investment

There are no explicit risk limits, apart from having a maximum 25% exposure to frontier markets.

## Sell discipline

---

For each holding, there is a review price, and if that is reached, the manager will revisit the investment case. A stock reaching its review price is not an automatic trigger to sell, but it does prompt a re-evaluation of what is changing for the company and whether that change has now been priced in by the market.

If a position drops below 1% of the trust, it is automatically put up for review, and the covering analyst is expected to conclude if the investment case is still attractive and the position should be added to, or if the investment case is broken and it should be removed from the trust. This discipline avoids having a long tail of 'hope stocks' which the manager might hope will turnaround but has no supporting evidence that this will happen.

## Risk controls

---

The manager operates with the following risk controls, which were outlined within the prospectus:

- up to 30% of the fund can be invested in developed markets;
- the maximum exposure to frontier markets is 25%;
- up to 5% of the fund can be invested in unquoted companies;
- no more than 10% can be invested in any single holding at the time of investment;
- no limits on geographic exposures;
- hedging, using index futures, options and forward currency contracts is permitted; and
- contracts for difference are permitted as is the use of bonds, warrants and equity-related securities including participation notes.

In addition, the manager works within the following parameters:

- maximum and minimum position sizes of 5% and 1%;
- while hedging is permitted, they are very unlikely to hedge currencies in practice, preferring instead to maintain diversified currency exposures;
- derivatives may only be used if direct market access is an issue; and
- whilst the portfolio may include a number of less liquid companies (benefitting from its closed-end structure), the manager will not buy illiquid companies (i.e. no stocks that can go for multi-day periods without trading).

JEFI does not intend to use derivatives or other financial instruments to take short positions, nor to increase gearing over the limit set out in the company's borrowing policy. Currency exposures will not be hedged routinely.

## ESG and change-based investing

---

ESG-related risks and opportunities play an important role in the investment process

Russia's Norilsk Nickel has been one of JEFI's best performers since launch

Stewardship forms a core component of JEFI's change-based investment process and the manager aims to understand ESG risks and opportunities for every investment considered, paying particular attention to management alignment and capital management, as well as environmental and social risk mitigation. In some instances, the underappreciated change that they seek to invest in relates to corporate governance – for example, JEFI may decide to invest in a company where its manager thinks that improving governance practices and shareholder returns are yet to be reflected in the share price.

The manager highlights Norilsk Nickel (discussed in the performance attribution sector on page 17) as a good example of an investment where ESG factors are central to the decision-making process. Governance improvements have increased the size and visibility of the company's dividend payouts and nickel is a key component in the electric vehicle batteries that will make a significant contribution to decarbonising transport over the coming decade. Set against these positive dynamics are the environmental risks that inevitably result from mining and smelting operations, and it is important for the manager to see that the company (it is investing billions of dollars into projects to cut sulphur dioxide emissions) is responding appropriately to these challenges.



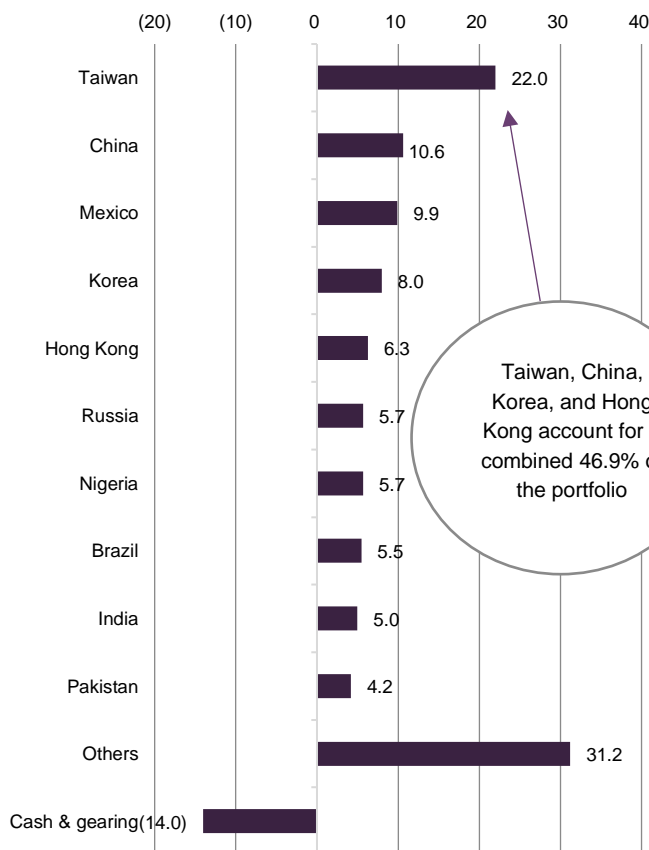
## Asset allocation

JEFI's country and sector allocations only loosely resembles the benchmark

The stock-picking style favoured by JEFI's manager means that the portfolio only loosely resembles the benchmark. As illustrated by Figure 4, this is most clearly represented by JEFI's much lower allocation to China. As at 31 October 2020, the relative difference between JEFI's exposure and that of the benchmark was (32.6%). This represents a marked increase from the (21.0%), as at the 31 July 2019 figures used in our last note. This change is primarily a result of the strong performance delivered by Chinese assets over the year to date.

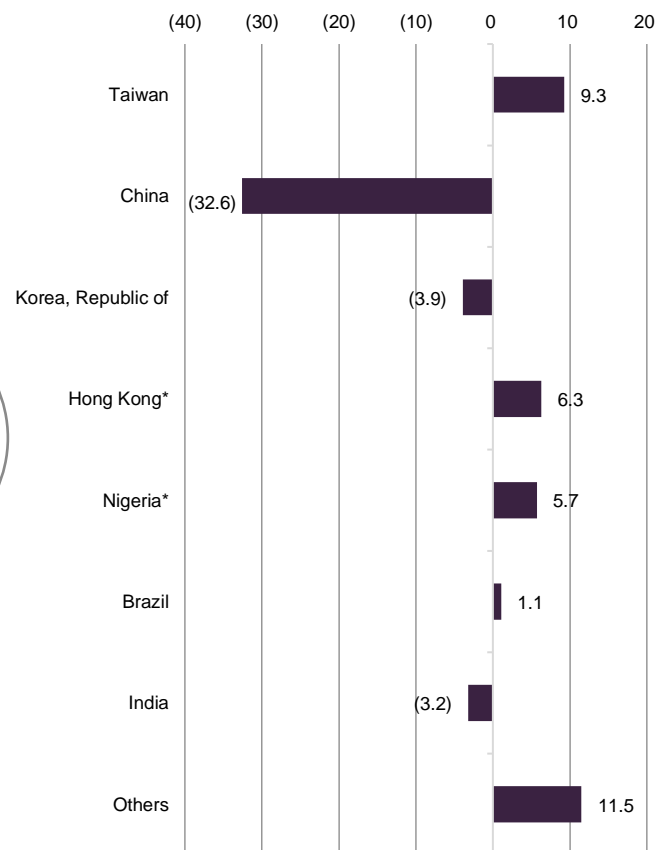
Taiwan continues to provide a particularly fertile ground for JEFI's bottom-up approach, with three of the top 10 holdings based there. The bottom-up investment process naturally steers JEFI to a lower allocation to China than many of its peers. Ross believes that greater value can be found in the likes of Hong Kong, where many smaller companies trade at discounts to their peer group on the mainland.

**Figure 3: JEFI asset allocation by country, as at 31 October 2020**



Source: JEFI, Marten & Co

**Figure 4: JEFI asset allocation difference versus benchmark as at 31 October 2020**



Source: JEFI, Marten & Co. Note: Mexico, Russia, and Pakistan are included in the 'Others' category of the MSCI EM Index. \*Note: MSCI classifies Hong Kong as a developed market and Nigeria as a frontier market

**Figure 5: JEFI sector allocation, as at 31 October 2020**

	JEFI (%)*	MSCI EM Index (%)*	Difference (%)
Information technology	24.1	18.4	5.7
Financials	21.1	17.1	4.0
Real estate	16.5	2.3	14.2
Industrials	11.2	4.3	6.9
Consumer discretionary	9.0	20.9	(11.9)
Materials	7.8	6.8	1.0
Energy	7.1	4.9	2.2
Communication services	6.6	13.2	(6.6)
Healthcare	5.8	4.3	1.5
Consumer staples	4.8	5.9	(1.1)
Utilities	-	1.9	(1.9)
Cash and gearing	(14.0)	-	

Source: JEFI, MSCI, Marten & Co. Note: figures may not sum to 100 due to rounding

Four of JEFI's top 10 holdings are in Taiwan

At 24.1% of the portfolio, technology is JEFI's largest sector allocation – it was 20% when we last published. As discussed in the top 10 holdings section, Taiwan Semiconductor, NetEase, and MediaTek have performed particularly well over the calendar year-to-date. Financials are also well represented, in large part reflecting Ross's view that the long-term financial inclusion catalyst behind holding sub-Saharan African banking stocks is currently greatly under-appreciated by the market.

**Figure 6: Allocation comparison, JEFI versus the MSCI Emerging Markets Index, as at 2 October 2020**

	JEFI (%)	MSCI EM Index (%)
Frontier market exposure	19.2	-
Large-cap exposure	28.1	67.5
Mid-cap exposure	20.0	28.4
Small-cap exposure	51.8	4.2

Source: JEFI, Marten & Co

Figures 6 and 7 add some layers to the earlier point on how JEFI's approach leads to a portfolio that only loosely resembles the benchmark.

**Figure 7: Valuation comparison, JEFI versus the MSCI Emerging Markets Index, as at 30 September 2020**

	JEFI	MSCI Emerging Markets Index
P/E ratio	11.4x	17.1x
P/B ratio	1.1x	1.8x
Dividend yield*	5.4%	2.4%
ROE	10.8%	10.9%
Ex-ante beta	0.9	-

Source: JEFI, Marten & Co. \*Note: trailing 12-month yield to 24 August 2020

## Top 10 holdings

**Figure 8: JEFI 10 largest holdings, as at 31 October 2020**

	Country/Region	Sector	% of gross assets 30/09/20	% of gross assets 31/07/19	% change
Samsung	Korea	IT	5.1	4.1	+1.0
Taiwan Semiconductor	Taiwan	IT	5.0	3.3	+1.7
Corp Inmobiliaria Vesta	Mexico	Real estate	4.9	4.6	+0.3
MediaTek	Taiwan	IT	4.8	3.3	+1.5
NetEase	China	IT/gaming	4.4	-	-
Guaranty Trust Bank	Nigeria	Financials	4.3	2.0	+2.3
Wilson Sons	Brazil	Industrials	3.8	3.9	(0.1)
Hindustan Petroleum	India	Energy	3.7	3.6	+0.1
KCB	Kenya	Financials	3.6	3.8	(0.2)
Chroma Ate	Taiwan	Industrials	3.4	3.4	-
<b>Total of top 10</b>			<b>43.0</b>	<b>38.1</b>	<b>+4.9</b>

Source: JEFI, Marten & Co

Over the initial phase of the pandemic, JEFI took the view that balance sheets across the portfolio were robust enough to negate the case for significantly increasing turnover of the portfolio

Ross did not significantly increase trading in the portfolio over the initial pandemic period, with turnover in the portfolio remaining within a similarly modest band to previous years. The manager felt comfortable in the ability of balance sheets of companies across the portfolio to withstand the early impact of lockdowns, where in some cases such as India, policy was on a par if not more stringent than in many Western countries.

As a result, the pandemic's effect on the composition of the top 10 holdings, compared to when we last published, has been somewhat modest. New entrants to this list include NetEase and MediaTek, both of which are having excellent years and were held in the portfolio last year. They are discussed in the performance attribution sector on page 16.

Ross also notes that none of the holdings have had to raise equity, while income distributions have held up far more vigorously than has been the case across much of the developed world, where payout ratios tend to be higher. Having been stung by the ripple effects of the global financial crisis of 2008, many of the largest banks held within JEFI's portfolio, as well as more broadly within EM and FM, entered the pandemic with healthy levels of capitalisation. In some cases, banks have felt comfortable enough to reinstate dividends. Ross cited the example of Russia's Sberbank, which reinstated its dividend at a record level in October.

**Figure 9: KCB share price**



Source: Bloomberg, Marten & Co

Within the portfolio, Ross says that the market appears to be valuing Kenya's KCB bank (whose shares were yielding 9.3% as at 17 November 2020) with same broad-brush stroke applied to banks based in countries where the economic impact has been more severe. In October, the IMF raised its GDP growth forecast for the country from -1% to +1%. It is one of a handful of Sub-Saharan African countries that are expected to grow this year, reflective of an economy that is amongst Africa's most diverse.

Nigeria's Guaranty Trust Bank is another top 10 holding selected for its exposure to the long-term financial inclusion theme, with some 60m Nigerians remaining unbanked. This and a return on equity of nearly 30% help highlight the long-term potential of Guaranty Trust Bank in Ross's view. A recent decision by Fitch to remove the company from its watch list, after pressure on its loan book was judged to have reduced significantly since March, might tempt foreign investors back in.

We have discussed many of the rest of the top 10 holdings in earlier notes, readers may wish to review the previous publications section on page 24.

**Figure 10: JEFI 10 largest holdings return and valuation indicators**

	Market cap (£bn)	Three-year average beta	Dividend yield (%)	*Total return YTD (%)	Trailing P/E ratio	Trailing P/B ratio
Samsung	303.9	0.9	2.4	38.2	18.4	1.5
Taiwan Semiconductor	334.2	1.4	2.1	57.0	25.1	7.0
Corp Inmobiliaria Vesta	0.8	-	5.5	17.4	12.8	-
MediaTek	29.2	1.4	1.5	68.0	33.8	3.2
NetEase	45.4	0.5	1.4	42.9	20.8	4.6
Guaranty Trust Bank	2.2	-	7.7	43.3	4.3	1.3
Wilson Sons	0.4	0.9	6.7	(18.9)	34.5	1.3
Hindustan Petroleum	2.8	0.8	4.4	(15.9)	11.0	0.9
KCB	0.8	-	9.3	(27.5)	6.9	1.3
Chroma Ate	1.7	1.2	2.0	11.9	28.3	4.2

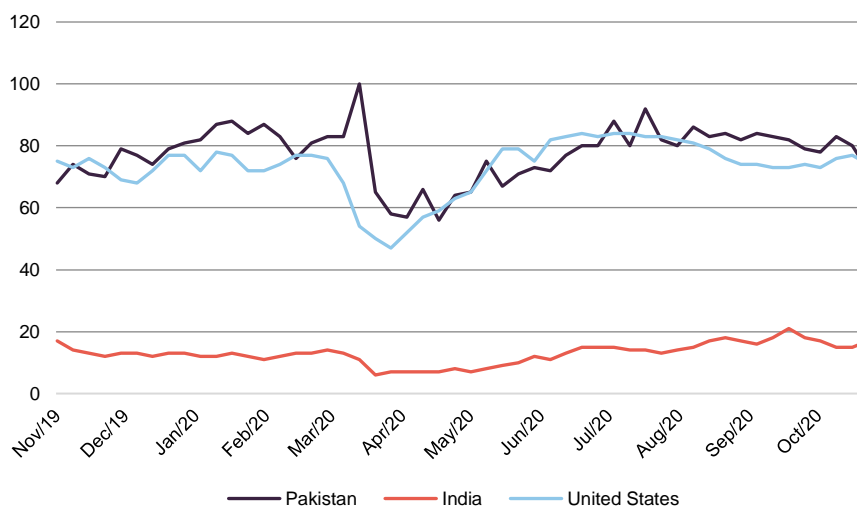
Source: JEFI, Morningstar, Bloomberg, Marten & Co. \*Note: total returns in local currency

Dubai Mall-owner, Emaar Malls, and Pakistan-based Toyota joint venture company, Indus Motors, are two companies outside the top 10 that JEFI's manager believes are particularly underappreciated

Outside of the top 10 holdings, Ross highlights UAE-based Emaar Malls and Pakistan's Indus Motors as two holdings with attractive fundamentals that are underappreciated. Ross believes that Emaar Malls, which owns Dubai Mall (the largest global mall by land area) is not being valued as a tier-one mall and that Namshi, its e-commerce business, (relied on by many of its tenants) is being overlooked. Rents have held up resiliently.

Indus Motors is a joint venture with Toyota in Pakistan. The company has strong pricing power in a country where car ownership has a lot of room for growth and the Toyota brand is popular. Google trend search results can provide a useful approximation for popularity. Figure 11 compares the popularity of the 'Toyota' search term in Pakistan with that of India and the US. Ross says the market is overly concerned with short-term car sales data and government policy in Pakistan, which has led to a valuation of Indus Motors that incorrectly implies the company is ex-growth.

**Figure 11: Google search term results for Toyota in selected markets – last 12 months**

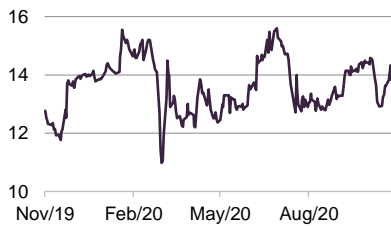


**Source:** Google Trends, Marten & Co. Interest over 12 months for the search topic 'Toyota.' Numbers represent search interest relative to the highest point on the chart for the given region and time. A value of 100 is the peak popularity for the term. A value of 50 means that the term is half as popular. A score of 0 means there was not enough data for this term.

## Portfolio activity over the past 12 months

Over the past 12 months, JEFI's manager has brought four new companies into the portfolio. They are AvivaSa (Turkish insurance company), Kunlun (Chinese gas distributor), Greatview (Chinese consumer staples packaging company), and Crédit Agricole Egypt (Egyptian retail and commercial bank).

**Figure 12: AvivaSa share price**



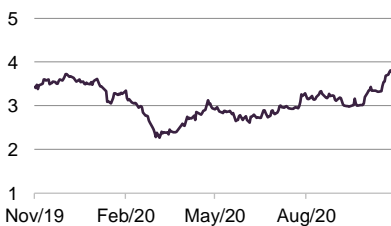
Source: Bloomberg, Marten & Co

**Figure 13: Kunlun share price**



Source: Bloomberg, Marten & Co

**Figure 14: Greatview share price**



Source: Bloomberg, Marten & Co

**Figure 15: Credit Agricole Egypt share price**



Source: Bloomberg, Marten & Co

## AvivaSa

Based in Turkey, AvivaSa ([www.avivasa.com.tr/en/](http://www.avivasa.com.tr/en/)) provides private pension and life insurance products. AvivaSa operates as a joint venture with UK-based Aviva. Ross believes the life insurance industry in Turkey is primed for growth and says that he was able to bring the company into the portfolio at an attractive valuation – the shares trade at a trailing P/E ratio of 9.1x. It has consistently grown its net income over the past few years.

## Kunlun

An integrated energy company, Kunlun ([www.kunlun.com.hk/s/index](http://www.kunlun.com.hk/s/index)) primarily operates as a seller of natural gas, with core operations in China, Kazakhstan, Peru, and Thailand. The company generates annual sales volume of 16bn cubic metres of natural gas and 6m tons of liquefied petroleum gas, making it one of the largest players in mainland China. Ross notes that Kunlun is a recent addition to the portfolio, with its dividend yield, currently at 5.6%, adding to the investment case.

## Greatview

Ross draws similarities between Hong Kong-listed Greatview's ([www.greatviewpack.com](http://www.greatviewpack.com)) business and that of Tetra Pak. Greatview's packaging footprint is particularly strong in dairy and non-carbonated soft drinks, where it is an established player on the mainland, giving it good pricing power. There continue to be strong opportunities for growth in both per capita consumption levels of beverages, as well as higher up the value-chain through premiumisation. Picking companies within supply chains that are well-positioned to take advantage of wider industry growth is an approach that is well represented across JEFI's portfolio. Ross adds that Greatview is an attractive payer of dividends and that it represents another example of a Hong Kong-listed company valued at an attractive discount to its peer group on the mainland.

## Crédit Agricole Egypt

France's Crédit Agricole is the majority shareholder in Crédit Agricole Egypt ([www.ca-egypt.com/en/personal-banking/](http://www.ca-egypt.com/en/personal-banking/)). Ross draws a parallel with AvivaSa, where local governance and management quality benefit from having a large, established developed market parent group/joint venture partner. Crédit Agricole Egypt operates as a retail and commercial bank, while it also has asset management and investment banking arms. As with Guaranty Trust Bank and KCB, Crédit Agricole Egypt is a play on long-term financial inclusion in Egypt, where about one-third of its 100m population have access to a bank. With the shares yielding more than 10% and still far off their pre-pandemic level, Ross took the opportunity to initiate the position.

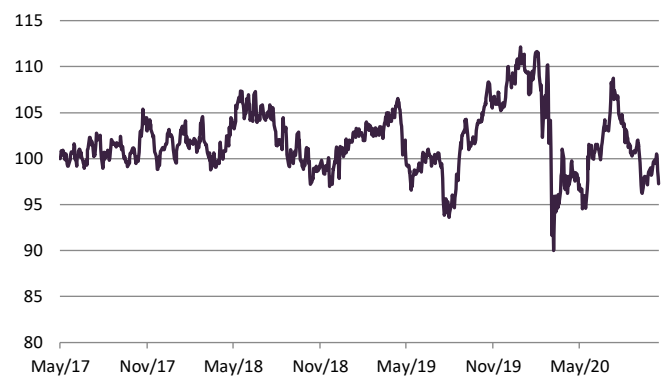
## Performance

**Figure 16: NAV TR relative to MSCI Emerging Markets, launch to 31 October 2020**



Source: Morningstar, Marten & Co

**Figure 17: NAV TR relative to MSCI Frontier Markets, launch to 31 October 2020**



Source: Morningstar, Marten & Co

Before the pandemic, JEFI's relative performance was strong over the preceding 12 months, compared to the MSCI EM and FM indices

Over the period from JEFI's launch in May 2017 until early February 2020, leading up to the pandemic's initial impact on Asian markets, JEFI's total NAV returns were about 10% ahead of the benchmark MSCI Emerging Index, as illustrated by Figure 17. JEFI's outperformance of the MSCI Frontier Markets Index was slightly better, at about 12%.

Since March, JEFI's relative performance has suffered against the MSCI Emerging Markets Index as a result of the emphatic rebound in Chinese economic activity and its stock market. If valuations in some of the other well-performing neighbouring Asian markets (like Hong Kong and Taiwan) were to move closer into line with China, JEFI would be likely to benefit on a relative performance basis.

The peer group used in Figure 18 includes all the funds in the AIC's global emerging markets sector, with the exceptions of Africa Opportunity, Gulf Investment Fund and Qannas, which are not global funds; and Ashmore Global Opportunities, which is in the process of liquidating its portfolio.

**Figure 18: JEFI-cumulative performance over periods ending 31 October 2020**

	3 months (%)	6 months (%)	1 year (%)	3 years (%)
JEFI NAV (TR)	1.8	12.0	(10.2)	(6.5)
JEFI share price (TR)	(2.2)	14.3	(13.9)	(18.2)
MSCI Emerging (TR)	4.3	18.3	8.7	10.0
MSCI Frontier (TR)	11.9	15.0	(2.2)	(1.8)
MSCI World Index (TR)	1.5	10.1	5.0	24.2
Peer group average NAV (TR)	4.1	18.0	1.9	5.8
Peer group average share price (TR)	6.3	19.8	1.2	3.2

Source: Morningstar, Marten & Co

## Performance drivers – positive contributions led by Taiwan tech

JEFI's manager has provided a performance attribution breakdown since launching on 15 May 2017, with the positive contributors illustrated by Figure 19.

**Figure 19: Top 5 contributors to returns since launch**

	Average weight (%)	Contribution (%)
MediaTek	2.9	5.2
Taiwan Semiconductor	2.6	3.1
NetEase	2.5	2.8
Chroma Ate	2.9	2.7
Norilsk Nickel	2.0	2.5

Source: JEFI, Marten & Co. Note: JEFI's launch to 31 July 2020

**Figure 20: Mediatek**



Source: Bloomberg, Marten & Co

## Mediatek

Ross says that MediaTek, held by JEFI since launch, has been going from strength to strength. In addition to cementing its position as the second-largest manufacturer of chipsets for mobile phones behind Qualcomm, the progress it has made in narrowing the technological gap has been eye-catching in his view. Ross says that MediaTek used to be one or two years behind Qualcomm – it is now neck and neck. MediaTek is well entrenched in the 5G cycle, which should support the ongoing growth of the business, and it has also been expanding into building smart chips for Amazon and Google's range of smart speakers. The manager adds that MediaTek benefits from having the pick of Taiwan's engineering talent, while its proximity to customers in mainland China is a strategic advantage.



**Figure 21: Taiwan Semiconductor**



Source: Bloomberg, Marten & Co

## Taiwan Semiconductor

Taiwan Semiconductor is a key supplier to Apple, Intel, and Nvidia. The company is the world's largest contract chipmaker, and it recently recorded its highest quarterly profit to date. The company has benefited from a trend that has seen its customers increase their inventory levels, as insurance against potential supply-chain disruptions. Taiwan Semiconductor would also be in a position to capitalise were there to be a sustained reduction in sourcing chips from China by Western buyers.

## Others

NetEase, China's largest online video game developer, has gone from strength to strength, building a globally competitive business. The company added to what was previously an exclusive listing on the NYSE with a \$2.7bn secondary offering in Hong Kong in June 2020.

Chroma Ate, another Taiwanese hardware enabler, manufactures precision electronics testing components. The company was once JEFI's largest holding, propelled by a doubling in the shares over the second half of 2017.

The fifth-largest driver of returns since inception has been Russia's Norilsk Nickel, the largest global producer of palladium and nickel. This holding was sold since our last note, where after a strong run the manager saw better opportunities elsewhere.

## Detractors

The largest detractors are illustrated by Figure 22 below. Other than Ascendis Health, all of these companies remain in the portfolio, with the manager believing that the investment cases remain intact.

**Figure 22: Top 5 detractors to returns since launch**

	Average weight (%)	Contribution (%)
Ascendis Health	1.1	(3.0)
Bank of Georgia	2.3	(2.5)
United Bank	1.4	(1.7)
Grit Real Estate Income	1.9	(1.5)
NWS Holdings	2.7	(1.4)

Source: JEFI, Marten & Co. JEFI's launch to 31 July 2020

## Peer group comparison

You can access up-to-date information on JEFI and its peers on the [QuotedData](#) website

JEFI is the only fund within its peer group investing in high yielding equities across both emerging and frontier markets

JEFI has some unique traits when compared to the peer group shown in Figure 23. Among the subset of the AIC's global emerging markets funds shown, Mobius is the only other fund that invests across both emerging and frontier markets. The similarities largely end there. Around a quarter of the Mobius fund is invested in healthcare and, with respect to geography, India and Brazil account for over a third of its portfolio. Mobius is also almost entirely growth-focused.

JPMorgan Global Emerging Markets Income (JEMI) is the only other company to invest in a portfolio of predominantly above-average yielding equities. There is some overlap with JEMI with Taiwan Semiconductor and Samsung also representing its two largest holdings. JEMI does not invest in frontier markets, which – as we discussed in the asset allocation section in the section looking at the banking sector in some of Sub Saharan Africa's largest economies – are providing some deeply discounted opportunities, with yields of close to 10% in some cases.

**Figure 23: Global emerging market subsector comparison table, as at 16 November 2020**

	Market cap	Discount	Yield	Ongoing charge	NAV total return performance over periods ending 31 October 2020		
	(GBPm)	(%)	(%)	(%)	6 months (%)	1 year (%)	3 years (%)
JEFI	73	(12.8)	5.4	1.36	12.0	(10.2)	(6.5)
Aberdeen Emerging Markets	292	(13.7)	3.5	1.07	24.1	9.3	9.7
BlackRock Frontiers	265	(2.8)	5.4	1.39	9.9	(17.2)	(22.3)
Fundsmith Emerg. Equities	341	(6.1)	0.3	1.40	19.0	5.5	17.1
Genesis Emerging Markets	1,032	(8.7)	1.5	1.11	17.1	4.5	8.9
JPMorgan Emerg. Markets	1,478	(4.4)	1.1	1.02	29.3	18.1	36.3
JPMorgan Gbl Emerg. Mkts Inc.	391	(7.1)	3.9	1.26	14.8	(0.1)	8.9
Mobius	107	(6.4)	0.3	1.70	27.2	18.7	-
Templeton Emerg. Markets	2,152	(10.4)	2.1	1.02	23.2	12.0	14.6
Utilico Emerging Markets	411	(11.9)	4.2	1.00	3.0	(21.7)	(14.7)
<b>Peer group average</b>	<b>654</b>	<b>(8.4)</b>	<b>2.8</b>	<b>1.23</b>	<b>18.0</b>	<b>1.9</b>	<b>5.8</b>
<b>Peer group median</b>	<b>366</b>	<b>(7.9)</b>	<b>2.8</b>	<b>1.19</b>	<b>18.0</b>	<b>5.0</b>	<b>8.9</b>

Source: Morningstar, Marten & Co. Note: performance figures are to 31 October 2020

JEFI's discount appears steep when factoring in the composition of its portfolio, its yield and the annual redemption at NAV provision

JEFI and BlackRock Frontiers are the sector's two highest-yielding funds, though the latter is capital growth-focused and its frontier-only approach means it cannot hold companies in China, Hong Kong, South Korea, and Taiwan – three of the best performing global markets so far this year (see page 3).

JEFI's ongoing charges are higher than the peer group average, but not overly so when you factor in its smaller size. JEFI remains keen to expand the trust, which might help improve liquidity and lower the ongoing charges ratio further.

JEFI trades at a relatively high discount compared to its peers despite providing the sector's joint-highest dividend yield. JEFI also provides an annual redemption facility (ARF) at NAV (see page 20).

## Dividend

**Figure 24: JEFI dividends declared since launch**

	Pence per share
September 2020	1.00
June 2020	1.20
March 2020	1.20
December 2019	2.40

Source: JEFI, Marten & Co. Note: JEFI's financial year runs to 30 September

JEFI's manager targets a dividend yield that is at least 20% higher than its benchmark's. Four payments are made per year, in April, July, October, and January. At launch, JEFI said it would target a minimum annualised dividend of 4%. As of 13 November 2020, JEFI's shares were yielding 5.4%.

For the financial year-end to 30 September 2020, the first interim dividend of 1.2p was paid on 17 April 2020. On 3 June 2020, JEFI declared a further interim dividend of 1.2p which was paid on 3 July 2020 – both distributions were fully covered by earnings.

The pandemic's initial impact led to JEFI reducing its expectations for dividend income growth for the financial year, though as Ross points out, the early suspension of dividend payments by banks was the result of regulatory intervention. As discussed in the asset allocation section, some banks have been reinstating dividends. For the majority of JEFI's portfolio, the outlook for dividends remains unchanged, according to Ross. This is in part due to the relative balance sheet strength of many companies – around a third of JEFI's portfolio companies hold net cash on their balance sheets.

## Premium/(discount)

Over the year to 31 October 2020, JEFI's shares moved within a range of a 13.7% discount to a 4.4% premium and an average discount of 6.1%. At 16 November 2020, JEFI was trading on a discount of 12.8%. Discounts across AIC's global emerging market sector widened sharply in the early phase of the pandemic, magnifying the impact of the wider sell-off in stocks.

JEFI operates a discount control mechanism using share buybacks and new issues of shares with the aim of ensuring that, in normal market conditions, the price of its shares will closely track the underlying NAV. Since its formation in 2017, JEFI has issued 4m additional shares at a premium to NAV. For JEFI to grow the fund, the shares would need to return to trading at a premium to NAV. With total assets of

The impact on income distributions has been far less pronounced in EM and FM markets

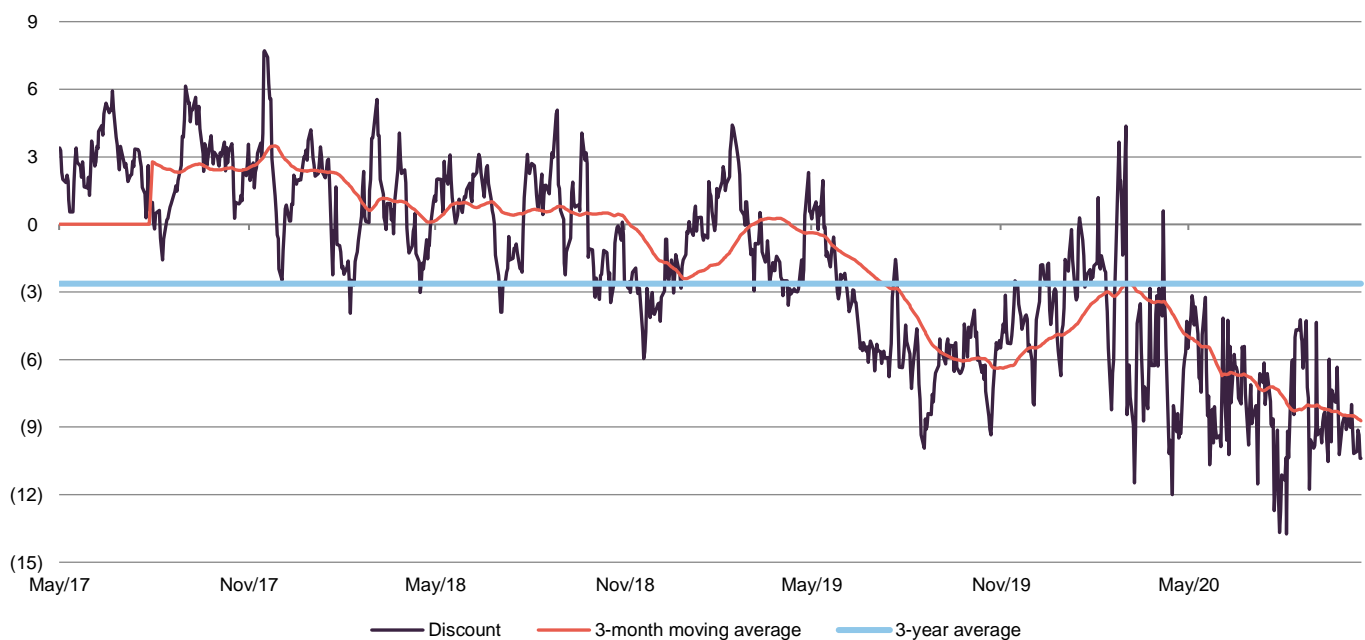
JEFI's asset base remains towards the lower end of the minimum size preferred by many asset managers. Growing the fund would require the shares to return to trading at a premium to NAV

Arguably, equity income investors can currently find greater visibility in growth markets

£86m as at 31 October, JEFI's asset base remains close to the lower end of the minimum size preferred by many institutional and wealth management investors.

Catalysts for a narrowing in the discount could come from an improvement in sentiment towards emerging and frontier market stocks, potentially helped by the fact that many EM and FM markets have been able to return to more normal levels of economic activity over recent months. What is more, a greater appreciation among equity income investors of the more robust state of balance sheets across banks in many growth markets, in addition to greater momentum towards sustained resumption of closer to normal levels of activity, might benefit JEFI disproportionately compared to many of its peers.

**Figure 25: JEFI discount (%) from launch to 31 October 2020**



Source: Morningstar, Marten & Co

## Annual redemption facility

Each year, JEFI plans to offer shareholders a chance to redeem their shares

JEFI has an annual redemption facility (ARF) that allows shareholders to request that the company redeems all or part of their shareholding. The operation of the ARF and the number of shares that will be redeemed are at the discretion of the board.

JEFI's interim results announcement on 22 June noted that for the 30 June 2020 redemption, it had received requests to redeem 4,607,803 ordinary shares, representing 5.1% of the issued share capital at the time. In the preceding year, JEFI repurchased 3,971,266 ordinary shares, as part of the ARF.

Annual management charge of 0.75% and no performance fee

Ongoing charges of 1.36%

## Fees and costs

Jupiter Unit Trust Managers Limited (JUTM), a subsidiary of Jupiter Investment Group Limited, is JEFI's AIFM. It is entitled to a management fee of 0.75% of NAV, payable quarterly in arrears. Any investment by JEFI in other funds managed or advised by any part of Jupiter Investment Group Limited would be excluded from the calculation of the NAV for the purposes of calculating the management fee. The management fee payable to JUTM for the interim period to 31 March 2020 was £302k. There is no performance fee. The investment management agreement can be terminated on 12 months' written notice from either party.

Investment management fees, as well as finance costs, are charged 75% to capital and 25% to revenue.

For the six months to 31 March 2020, JEFI's ongoing charges ratio was 1.36%. The ratio is calculated as a proportion of the total ongoing charges to JEFI's average NAV over the period.

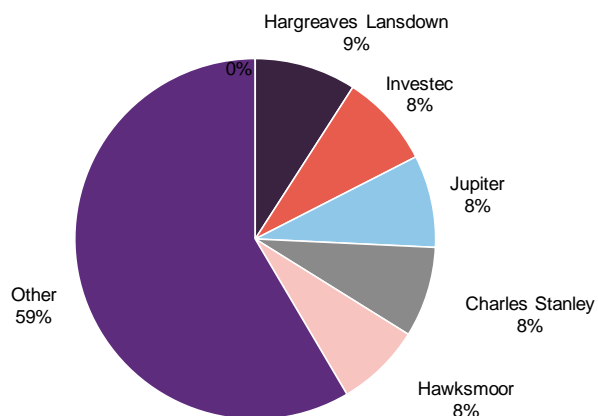
## Capital structure

As at 31 October 2020, there are 85.5m ordinary shares in issue and no other classes of share capital. JEFI has repurchased 4.6m shares since we last wrote on the trust, as part of its discount management policy. The policy aims to prevent a material imbalance between the trust's shares and NAV, in normal market conditions. Shares that are repurchased may be held in treasury.

At the last AGM held in February 2020, shareholders granted JEFI permission to repurchase of up to 14.99% of the issued share capital.

## Major shareholders

Figure 26: JEFI's major shareholders, as at 3 September 2020



Source: Bloomberg, Marten & Co

## Board

JEFI has four directors, all of whom are non-executive and independent of the manager. All the directors acquired shares at launch and have topped up their holdings since. The directors committed to investing all of their first two years' net earnings in JEFI shares and have exceeded that commitment. It is JEFI's policy for all directors to stand for re-election annually.

**Figure 27: JEFI's board**

Director	Position	Appointed	Length of service (years)	Annual fee (GBP)	Shareholding*
John Scott	Chairman	15/05/17	3.5	37,500	76,819
Audrey McNair	Chairman of the audit committee	15/05/17	3.5	30,000	59,358
Mark Dampier	Director	15/05/17	3.5	25,000	85,466
Nicholas Moakes	Director	15/05/17	3.5	25,000	88,278

Source: JEFI, Marten & Co. \*Note: shareholding figures as at 22 June 2020

### John Scott

(Chairman)

John is a former international investment banker. He was appointed a director of Scottish Mortgage Trust in 2001 and became chairman at the end of 2009. John is a former executive director of Lazard Brothers & Co. During his 20 years with Lazard, he was involved with the merchant bank's corporate advisory activities and its Asian businesses. He is currently chairman of Impax Environmental Markets and Alpha Insurance Analysts, as well as being a director of various companies, including Bluefield Solar Income Fund, and CC Japan Income & Growth Trust.

### Audrey McNair

(Chairman of the audit committee)

Audrey has been a non-executive director of Earl Shilton Building Society since February 2015 (and is currently chair of its audit, compliance and risk committee) and a non-executive director of British Friendly Society since April 2016 (and is currently chair of its risk committee). In her executive career across the buy and sell-side in the City of London, she has gained extensive knowledge of regulatory governance and investment management processes and products. Audrey's experience includes having worked at Aberdeen Asset Management from May 2008 to March 2016, starting as head of internal audit (EMEA) and becoming global head of Business Risk (including Operational, IT and strategic risk) and responsible for the group's risk management framework and internal adequacy capital assessment.

## Mark Dampier

(Director)

Mark is head of investment research at Hargreaves Lansdown, a position he has held since 1998; a director of Hargreaves Lansdown Asset Management; and a member of Hargreaves Lansdown's executive management committee. He has over 30 years' experience in the fund management industry, including managing and marketing investment trusts and unit trusts, has published a book on effective investing, and is a leading commentator on the investment sector. He was appointed to the board of Invesco Income Growth Trust in March 2016.

## Nicholas Moakes

(Director)

Nick is chief investment officer of The Wellcome Trust, one of the world's largest charitable foundations. He is on the board of the Investor Forum, an investor-led organisation established to improve long-term investment returns through collective shareholder engagement. He also chairs the Imperial College Endowment Fund and was appointed to the board of Foreign & Colonial Investment Trust Plc in March 2011. Nick has nearly 30 years' experience in Asia and 25 years' experience in global equity markets. He started his career in the diplomatic service, where he specialised in Hong Kong and China. Before joining Wellcome in 2007, he was head of the Asia Pacific investment team and co-head of emerging markets at BlackRock Investment Management.

## Fund profile

---

Benchmark agnostic exposure to emerging and frontier markets

Launched in May 2017, JEFI invests in stocks that provide exposure to emerging and frontier markets (any country that is not classified as developed or emerging). The aim is to generate both capital growth and income over the long term, using an investment approach that is benchmark agnostic, unconstrained and focused on identifying positive change.

## Investment manager

---

You can access the fund's website at [www.jupiteram.com/jefi](http://www.jupiteram.com/jefi)

JEFI's portfolio is managed by Ross Teverson, of Jupiter Asset Management (Jupiter), who subcontract the job of managing the portfolio from the AIFM, Jupiter Unit Trust Managers Limited. Ross is now the sole manager of JEFI with the departure of Charles Sunnucks in June following Jupiter's merger with Merian. The emerging markets team has approximately £1.4bn under management. The manager can also draw on the expertise of Jupiter's wider pool of asset managers and analysts.

## Ross Teverson

Ross has been managing an unconstrained emerging markets portfolio since 2012. He joined Jupiter in 2014 as head of strategy, Global Emerging Markets. Before joining Jupiter, Ross worked for 15 years at Standard Life Investments, where he managed a global emerging markets equity fund. Ross spent seven years in Standard Life Investments' Hong Kong office, where he managed an Asian equity

fund and was a director of the business. He is a graduate of Oxford University and is a CFA Charterholder.

## Previous publications

Readers interested in further information about JEFI may wish to read our earlier notes. You can read the notes by clicking on them in Figure 28 or by visiting our website.

**Figure 28: QuotedData's previously published notes on JEFI**

Title	Note type	Date
<a href="#">A very successful fundraise</a>	Initiation	28 November 2017
<a href="#">Off to a great start</a>	Update	29 August 2018
<a href="#">Income objective exceeded</a>	Annual overview	15 April 2019
<a href="#">Unjustified discount?</a>	Update	23 September 2019

Source: Marten & Co





## IMPORTANT INFORMATION

Marten & Co (which is authorised and regulated by the Financial Conduct Authority) was paid to produce this note on Jupiter Emerging & Frontier Income Trust.

This note is for information purposes only and is not intended to encourage the reader to deal in the security or securities mentioned within it.

Marten & Co is not authorised to give advice to retail clients. The research does not have

regard to the specific investment objectives financial situation and needs of any specific person who may receive it.

The analysts who prepared this note are not constrained from dealing ahead of it but, in practice, and in accordance with our internal code of good conduct, will refrain from doing so for the period from which they first obtained the information necessary to

prepare the note until one month after the note's publication. Nevertheless, they may have an interest in any of the securities mentioned within this note.

This note has been compiled from publicly available information. This note is not directed at any person in any jurisdiction where (by reason of that person's nationality, residence or otherwise) the publication or availability of this note is prohibited.

**Accuracy of Content:** Whilst Marten & Co uses reasonable efforts to obtain information from sources which we believe to be reliable and to ensure that the information in this note is up to date and accurate, we make no representation or warranty that the information contained in this note is accurate, reliable or complete. The information contained in this note is provided by Marten & Co for personal use and information purposes generally. You are solely liable for any use you may make of this information. The information is inherently subject to change without notice and may become outdated. You, therefore, should verify any information obtained from this note before you use it.

**No Advice:** Nothing contained in this note constitutes or should be construed to constitute investment, legal, tax or other advice.

**No Representation or Warranty:** No representation, warranty or guarantee of any kind, express or implied is given by Marten & Co in respect of any information contained in this note.

**Exclusion of Liability:** To the fullest extent allowed by law, Marten & Co shall not be liable for any direct or indirect losses, damages, costs or expenses incurred or suffered by you arising out of or in connection with the access to, use of or reliance on any information contained in this note. In no circumstance shall Marten & Co and its employees have any liability for consequential or special damages.

**Governing Law and Jurisdiction:** These terms and conditions and all matters connected with them, are governed by the laws of England and Wales and shall be subject to the exclusive jurisdiction of the English courts. If you access this note from outside the UK, you are responsible for ensuring compliance with any local laws relating to access.

No information contained in this note shall form the basis of, or be relied upon in connection with, any offer or commitment whatsoever in any jurisdiction.

**Investment Performance Information:** Please remember that past performance is not necessarily a guide to the future and that the value of shares and the income from them can go down as well as up. Exchange rates may also cause the value of underlying overseas investments to go down as well as up. Marten & Co may write on companies that use gearing in a number of forms that can increase volatility and, in some cases, to a complete loss of an investment.

QuotedData is a trading name of Marten & Co, which is authorised and regulated by the Financial Conduct Authority.

**123a Kings Road, London SW3 4PL  
0203 691 9430**

**www.QuotedData.com**

Registered in England & Wales number 07981621,  
2nd Floor Heathmans House,  
19 Heathmans Road, London SW6 4TJ

Edward Marten (em@martenandco.com)

David McFadyen (dm@martenandco.com)

Alistair Harkness (ah@martenandco.com)

Colin Edge (ce@martenandco.com)

**INVESTMENT COMPANY RESEARCH:**

Matthew Read (mr@martenandco.com)

James Carthew (jc@martenandco.com)

Shonil Chande (sc@martenandco.com)

Richard Williams (rw@martenandco.com)